



ELEMENTAL

RIGID CORE FLOORING

BY ASPECTA

RIGID CORE 0.55



ALWAYS THE RIGHT CHOICE: **ELEMENTAL RIGID CORE 0.55**

Introducing ELEMENTAL Rigid Core 0.55, the stunning new flooring range from ASPECTA™. Where beautiful aesthetics blend with the latest technology to create floors that are truly special.

Whether moving in or refurbishing, the right choice of flooring for your home depends on the size of rooms and planned use. If convenience, speed of installation and footstep sound insulation are the main considerations, we recommend floating ELEMENTAL Rigid Core 0.55 flooring with DropLock 100™ – a no-glue installation system available in planks and tiles.

Thanks to the unique characteristics of ELEMENTAL Rigid Core 0.55 flooring, you no longer have to worry about choosing the right floor because the ELEMENTAL Rigid Core flooring is durable, dimensionally stable and 100% waterproof! Despite different structures, each model in the collection has a particularly authentic surface finish, is dirt-resistant and easy to care for. With a wide range of elegant designs to choose from, finding the perfect floor for your project has never been easier.

The next generation of floors: the innovative, modular **ELEMENTAL Rigid Core 0.55** flooring combines attractive design with the latest technology. The heart of the flooring is composed of a 3.65mm extruded vinyl core incorporating the innovative **Rigid Core Technology™**. A 0.55 mm thick vinyl wear layer is applied on top of this rigid core layer, while a 1.0 mm thick HDPE underlay helps to level out imperfections in the subfloor and insulates sound down to 20 dB.

The ELEMENTAL Rigid Core flooring construction is extremely robust and dimensionally stable. It is also remarkably light and compact and, in combination with the DropLock 100™ locking system, easy and fast to install.

Thanks to the Rigid Core Technology™ construction, the flooring is also 100% waterproof and the ideal choice for bathrooms, kitchens and greenhouses.

- Authentic 'natural timber' wood embossing with an ultra-matt ceramic bead finish
- High level of sound insulation (20 dB)
- 100% waterproof
- Level of Use class 34 (according to EN16511)
- High dimensional stability; up to 1000 m² can be installed without expansion joints in the middle of the floor*
- Evens out minor subfloor imperfections*
- Can be directly laid on old floor coverings such as PVC, linoleum, cork and ceramic tiles*
- Suitable for application on subfloor heating systems up to 30 degrees Celsius
- Can resist direct sunlight temperatures up to 60 degrees Celsius, such as in greenhouses*
- Easy and fast to install with DropLock 100™ installation system
- 15-year warranty in residential properties
- 10-year warranty in properties

ELEMENTAL RIGID CORE 0.55	
Installation method	Floating installation - DropLock 100™ system
Total thickness	5.2 mm
Wear layer thickness	0.55 mm
Plank size	1210 x 180 mm

*For detailed information on the laying of ELEMENTAL Multilayer, please go to our website www.elementalbyaspecta.com



ES537815 COUNTRY OAK - FUMED
Emboss: Natural Timber I Size: 1210 x 180/5,2 mm



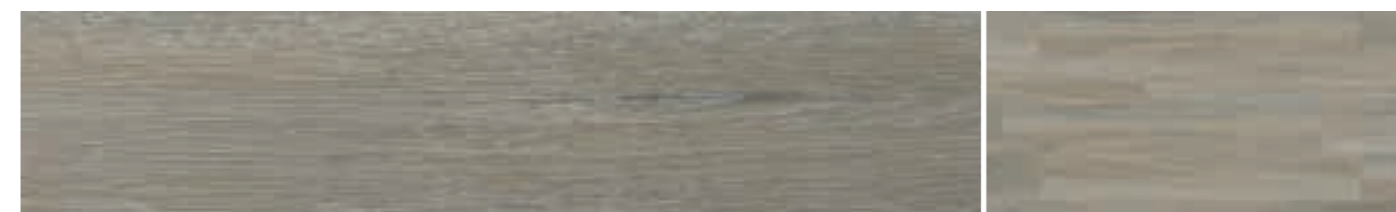
ES537811 COUNTRY OAK - NATURAL
Emboss: Natural Timber I Size: 1210 x 180/5,2 mm



ES537812 COUNTRY OAK - IVORY
Emboss: Natural Timber I Size: 1210 x 180/5,2 mm



ES530210 MODERN OAK - GRAPHITE
Emboss: Natural Timber I Size: 1210 x 180/5,2 mm



ES530212 MODERN OAK - GREY
Emboss: Natural Timber I Size: 1210 x 180/5,2 mm



ES530217 MODERN OAK - NORDIC
Emboss: Natural Timber I Size: 1210 x 180/5,2 mm

Pictures are for reference purposes only. Please order samples to experience the full colour and texture.

The next generation of floors: the innovative, modular **ELEMENTAL Rigid Core 0.55** flooring combines attractive design with the latest technology. The heart of the flooring is composed of a 3.65mm extruded vinyl core incorporating the innovative **Rigid Core Technology™**. A 0.55 mm thick vinyl wear layer is applied on top of this rigid core layer, while a 1.0 mm thick HDPE underlay helps to level out imperfections in the subfloor and insulates sound down to 20 dB.

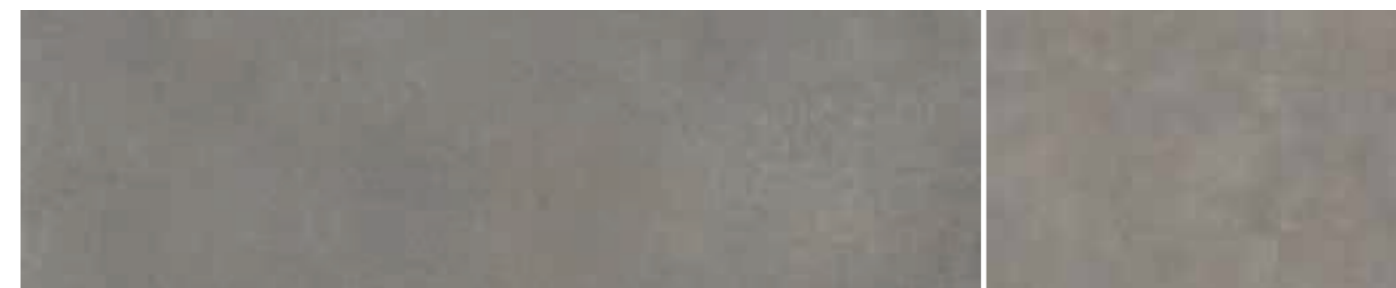
The ELEMENTAL Rigid Core flooring construction is extremely robust and dimensionally stable. It is also remarkably light and compact and, in combination with the DropLock 100™ locking system, easy and fast to install.

Thanks to the Rigid Core Technology™ construction, the flooring is also 100% waterproof and the ideal choice for bathrooms, kitchens and greenhouses.

- Authentic 'textured concrete' embossing with an ultra-matt ceramic bead finish
- High level of sound insulation (20 dB)
- 100% waterproof
- Level of Use class 34 (according to EN16511)
- High dimensional stability; up to 1000 m² can be installed without expansion joints in the middle of the floor*
- Evens out minor subfloor imperfections*
- Can be directly laid on old floor coverings such as PVC, linoleum, cork and ceramic tiles*
- Suitable for application on subfloor heating systems up to 30 degrees Celsius
- Can resist direct sunlight temperatures up to 60 degrees Celsius, such as in greenhouses*
- Easy and fast to install with DropLock 100™ installation system
- 15-year warranty in residential properties
- 10-year warranty in properties

ELEMENTAL RIGID CORE 0.55	
Installation method	Floating installation - DropLock 100™ system
Total thickness	5.2 mm
Wear layer thickness	0.55 mm
Tile	906 x 448 mm

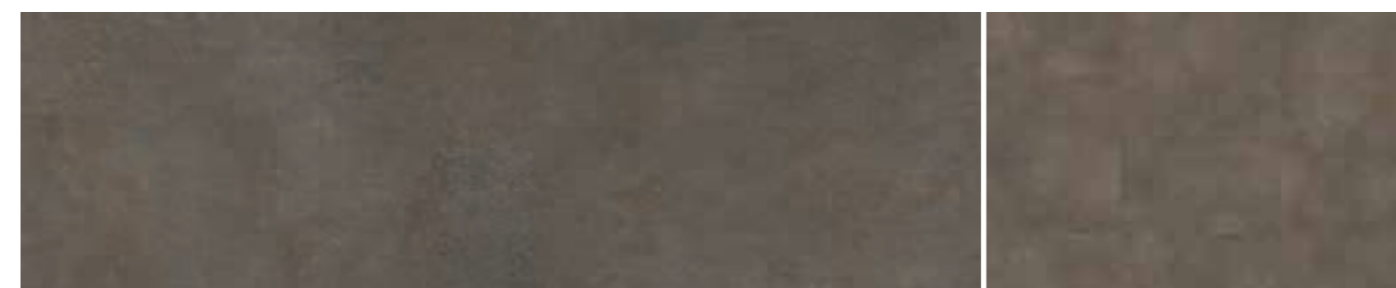
*For detailed information on the laying of ELEMENTAL Multilayer, please go to our website www.elementalbyaspecta.com



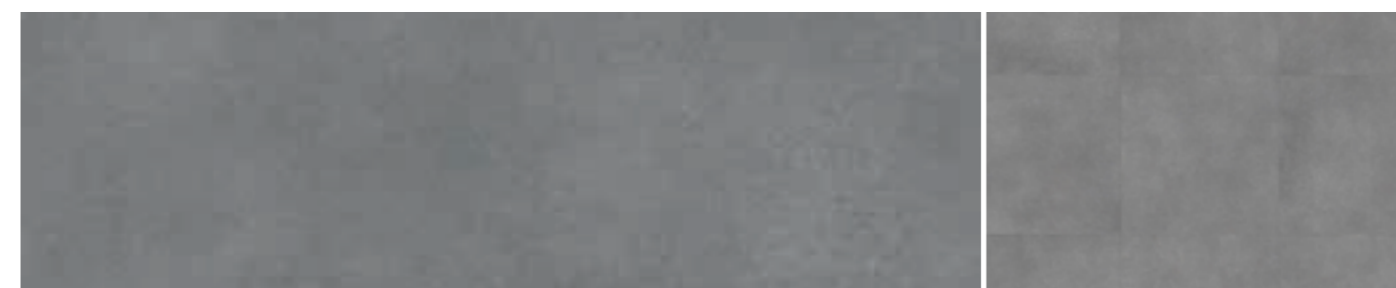
ES1722360 AUTHENTIC CONCRETE - PEWTER
 Emboss: Textured Concrete | Size: 906 x 448/5,2 mm



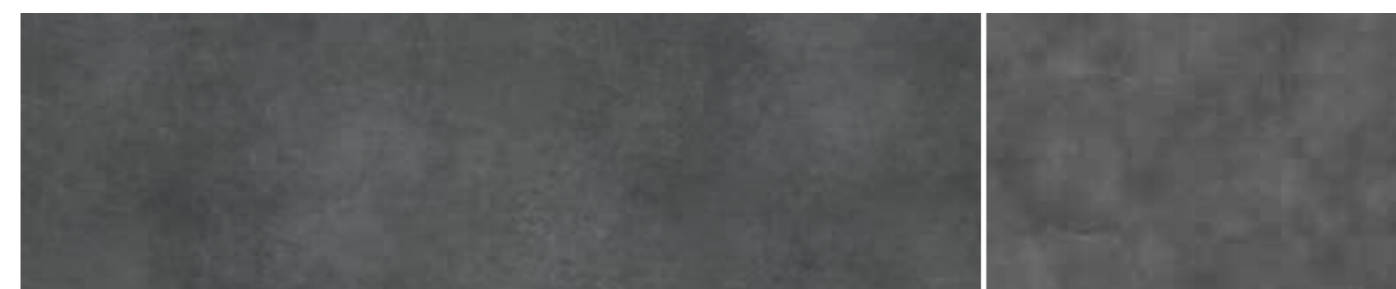
ES1722362 AUTHENTIC CONCRETE - TITANIUM
 Emboss: Textured Concrete | Size: 906 x 448/5,2 mm



ES1722364 AUTHENTIC CONCRETE - OXIDE
 Emboss: Textured Concrete | Size: 906 x 448/5,2 mm



ES1722367 AUTHENTIC CONCRETE - STEEL
 Emboss: Textured Concrete | Size: 906 x 448/5,2 mm

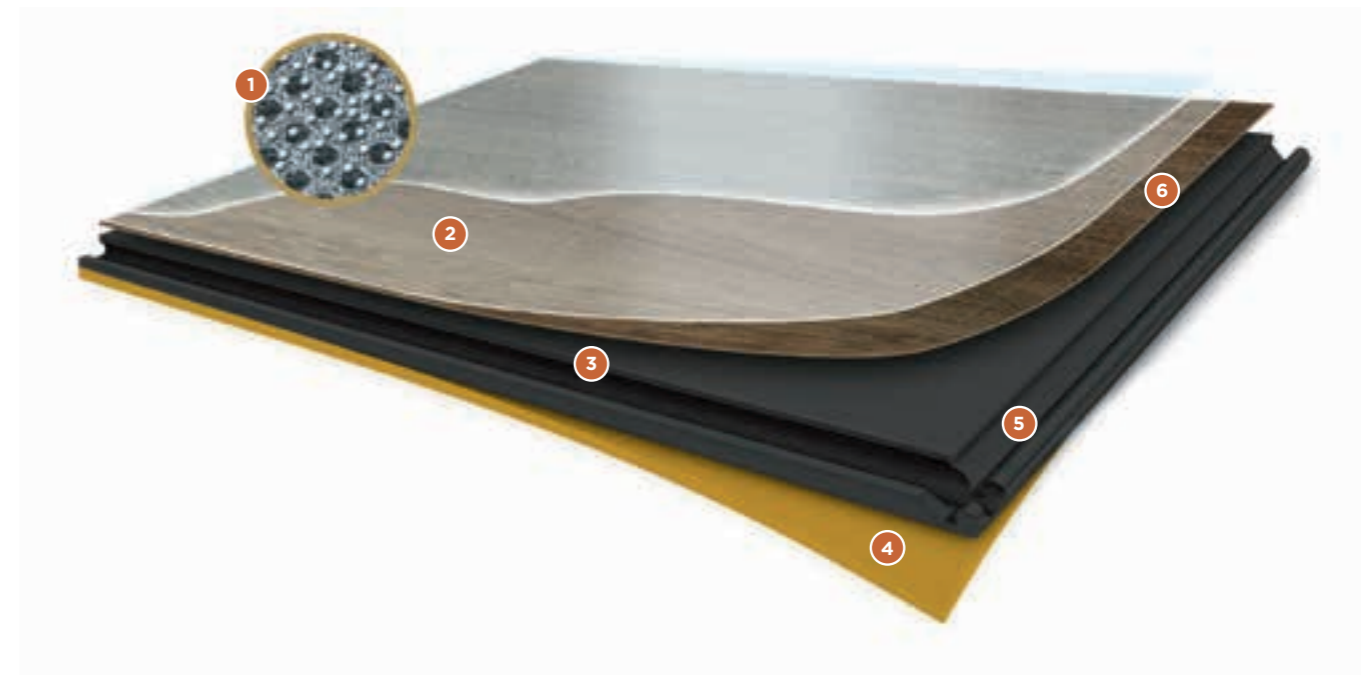


ES1722369 AUTHENTIC CONCRETE - LEAD
 Emboss: Textured Concrete | Size: 906 x 448/5,2 mm

Pictures are for reference purposes only. Please order samples to experience the full colour and texture.



AUTHENTIC CONCRETE - PEWTER
ES1722360



1 URETHANE COATING WITH CERAMIC BEAD PARTICLES

Microscopic ceramic particles suspended in a UV cured urethane coating for superior wear and stain resistance and easy care and maintenance.

2 CLEAR VINYL WEAR LAYER

Transparent vinyl wear layer provides significant durability against scuffs and abrasions.

3 SOLID POLYMER CORE

A high-density waterproof solid polymer composite core that is rigid, strong, dimensionally stable, and dent resistant.

4 SOUND MITIGATING UNDERLAYMENT

A pre-attached underlayment that minimizes transmitted sound, is shock absorbing, and provides warmth and comfort underfoot and helps further conceal subfloor imperfections.

5 DROPLOCK 100® TECHNOLOGY

End joints utilize DROPLOCK 100® Technology to facilitate a fold-down locking connection that dramatically expedites installation speed and aligns the top-surfaces of adjoining planks.

6 HIGH-RESOLUTION PRINTED DECORATIVE FILM

High-resolution printed film delivers the beauty and realism of natural wood with vivid clarity.

TECHNICAL DATA

PHYSICAL PROPERTIES & PACKAGING (FLOATING MULTILAYER MODULAR FLOORING - 5,2 / 0,55 MM)		
Series & Collections	Woods • Country Oak Fumed • Country Oak Natural • Country Oak Ivory • Modern Oak Graphite • Modern Oak Nordic • Modern Oak Grey	Tiles • Authentic Concrete Pewter • Authentic Concrete Titanium • Authentic Concrete Oxide • Authentic Concrete Steel • Authentic Concrete Lead
Construction Extruded Vinyl Core Pre-Attached Underlayment	4,2 mm (including printfilm) 1,0 mm HDPE	4,2 mm (including printfilm) 1,0 mm HDPE
Use	Commercial and Residential	Commercial and Residential
Size	1210 mm x 180 mm	906 mm x 448 mm
Wear Layer	0,55 mm	0,55 mm
Edge Detail	4 sides Micro-Bevel Edge	4 sides Micro-Bevel Edge
Finish	Urethane with Ceramic Bead (CB)	Urethane with Ceramic Bead (CB)
Embossing(s)	Natural Timber	Textured Concrete
Thickness	5,2 mm	5,2 mm
Mass per Unit Area	7,89 kg/m ²	7,83 kg/m ²
Pieces/Carion	10	6
Coverage/Piece	0,22 m ²	0,41 m ²
Coverage/Carion	2,178 m ²	2,44 m ²
Coverage/Pallet	56 Cartons/Pallet (121,97 m ²)	48 Cartons/Pallet (116,90 m ²)
Coverage/Container	20 Pallets/Container (2439,40 m ²)	20 Pallets/Container (2337,91 m ²)
Limited Warranty	10 year commercial 15 year residential	10 year commercial 15 year residential

EUROPEAN / INTERNATIONAL STANDARDS - MANUFACTURING & USAGE (EN 16511)			
Description	Standard	Requirements	Results
Classification (Level of Use)	EN 16511 EN ISO 10874	Commercial - Very Heavy (Class 34) Refer to Standards Below	Passes Requirements (Refer to Results Below)
Wear Resistance IP, Method A	EN 13329, Annex E	≥4,000 cycles	Surpasses Requirements
Impact Resistance (Big Ball)	EN 13329+A1, Annex F	No Cracks	Surpasses Requirements
Micro-Scratch Resistance [Class]¹	EN 16094, Method B	MSR-A2/MSR-B1	Passes / Surpasses
Castor Chair Resistance	EN 425	After 25,000 cycles: No Disturbance to the Surface; No Delamination, Cracks, or Disruptions	Passes Requirements
Effect of Furniture Leg	EN 424	No Visible Damage	Passes Requirements
Residual Indentation	EN ISO 24343-1	≤0,15mm	Surpasses Requirements
Resistance to Staining [Grade, per Group]	EN 438-2 (Group 1 & 3 - Only 10 Minutes)	Groups 1, 2 & 3: Grade 5	Passes Requirements
Locking Strength	ISO 24334	Long Side ≥ 2,0kN/m Short Side ≥ 3,5kN/m	Surpasses Requirements
Dimensional Stability Due to Variation of Temperature	EN ISO 23999	≤0,25%	Surpasses Requirements
Thickness (t)	ISO 24337	t _{avg} ≤ 0,50mm (Versus Nominal) t _{max} - t _{min} ≤ 0,50mm	Passes Requirements
Length (l)	ISO 24337	l ≤ 1500mm: l ≤ 0,5mm l > 1500mm: l ≤ 0,3mm/m (Versus Nominal)	Passes Requirements
Width (w)		w _{avg} ≤ 0,10mm (Versus Nominal) w _{max} - w _{min} ≤ 0,20mm	Passes Requirements
Squareness (q)		q _{max} ≤ 0,20mm	Passes Requirements
Straightness (s)		s _{max} ≤ 0,30mm/m	Passes Requirements
Flatness (f)	ISO 24337	Maximum Single Values: f _{w,concave} ≤ 0,15%, f _{w,convex} ≤ 0,20% f _{l,concave} ≤ 0,50%, f _{l,convex} ≤ 1,00%	Passes Requirements
Openings (o)	ISO 24337	Measured from the Surface Between Vertical, Contacting Edges: o _{avg} ≤ 0,15mm, o _{max} ≤ 0,20mm	Passes Requirements
Height Difference (h)	ISO 24337	h _{avg} ≤ 0,10mm h _{max} ≤ 0,15mm	Passes Requirements

EUROPEAN / INTERNATIONAL STANDARDS - AUXILIARY PERFORMANCE & SAFETY			
Description	Standard	Requirements	Results
Colour Fastness to Light	ISO 105-B02, Method 3	≥Grade 6	Passes Requirements
Slip Resistance (Wet)	DIN 51130	Grade R10: ≥10° and <19°	Surpasses Requirements
Slip Resistance (Australia / New Zealand)	AS 4586	Wet Pendulum (Slider 96) P4: 45-54 SRV Oil-Wet Inclining Platform Grade R9: ≥6° and <10°	Passes / Surpasses
Slip Resistance (UK)	BS 7976-2+A1	Ratings - Slip Potential Low: 36+ PTV Moderate: 25-35 PTV High: 0-24 PTV	Low Slip Potential - Dry & Wet
Resistance to Staining	EN ISO 26987:2012	N/A (No Official Requirements)	0 (Not Affected/Unchanged)
Density	EN ISO 23996:2012/ ISO 23996:2007 Method A	N/A	1589 kg/m ³
Thickness of wear layer	ISO 24340: 2006	N/A	Surpasses Requirements
Impact Sound Insulation¹	EN ISO 10140-3 ISO 717-2 EN ISO 140-8	N/A	L _w = 20 dB
A-weighted walking sound pressure level	EN 16205:2013	N/A	L _{nwalk, A} = 80 dB(A)
Product-Content Safety	REACH SVHC 191	Refer to Standard	Passes Requirements

EUROPEAN / INTERNATIONAL - CE CERTIFICATION / TESTING			
Description	Standard	Requirements	Results
CE Certification	EN 14041	Refer to Standards Below	Refer to Results Below
Reaction to Fire (and Smoke Production)	EN 13501-1 EN ISO 9239-1 EN ISO 11925-2	B₁ - s1 Classification Critical Flux: ≥8,0kW/m ² Flame Spread: ≤150mm within 20s Smoke value as % x min: ≤750	Passes Requirements
Formaldehyde Emission	EN 717-1	Class E1: Release ≤0,124mg/m ³	Passes Requirements
Content of PCP (Pentachlorophenol)	EN 12673:1999	<5ppm	Passes Requirements
Slip Resistance (Dry)	EN 13893	Class DS: Coefficient of Friction ≥0,30	Surpasses Requirements
Static Electrical Propensity	EN 1815, Method A	Antistatic Floor Coverings: ≤2,0kV (Absolute Value)	Passes Requirements/Antistatic
Thermal Resistance Thermal Conductivity	EN 12664	N/A (No Official Requirements)	TR= 0,051 (m ² .K)/W TC= 0,102 W/m.k

Footnotes

1) **Impact Sound Insulation (EN ISO 10140-3, ISO 717-2, EN ISO 140-8):** ΔL_w = Weighted Reduction of Impact Sound Pressure Level

The manufacturing facility is ISO 9001 (Quality Management System) and ISO 14001 (Environmental Management System) certified.

Uw Aspecta distributeur:



Galileistraat 13 -1704 SE - Heerhugowaard

T 072 - 5710766
E info@viehoff.nl
W www.viehoff.nl